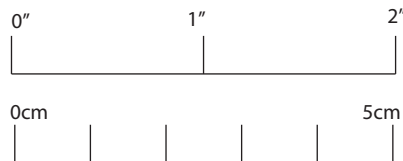


Zipper Pouch



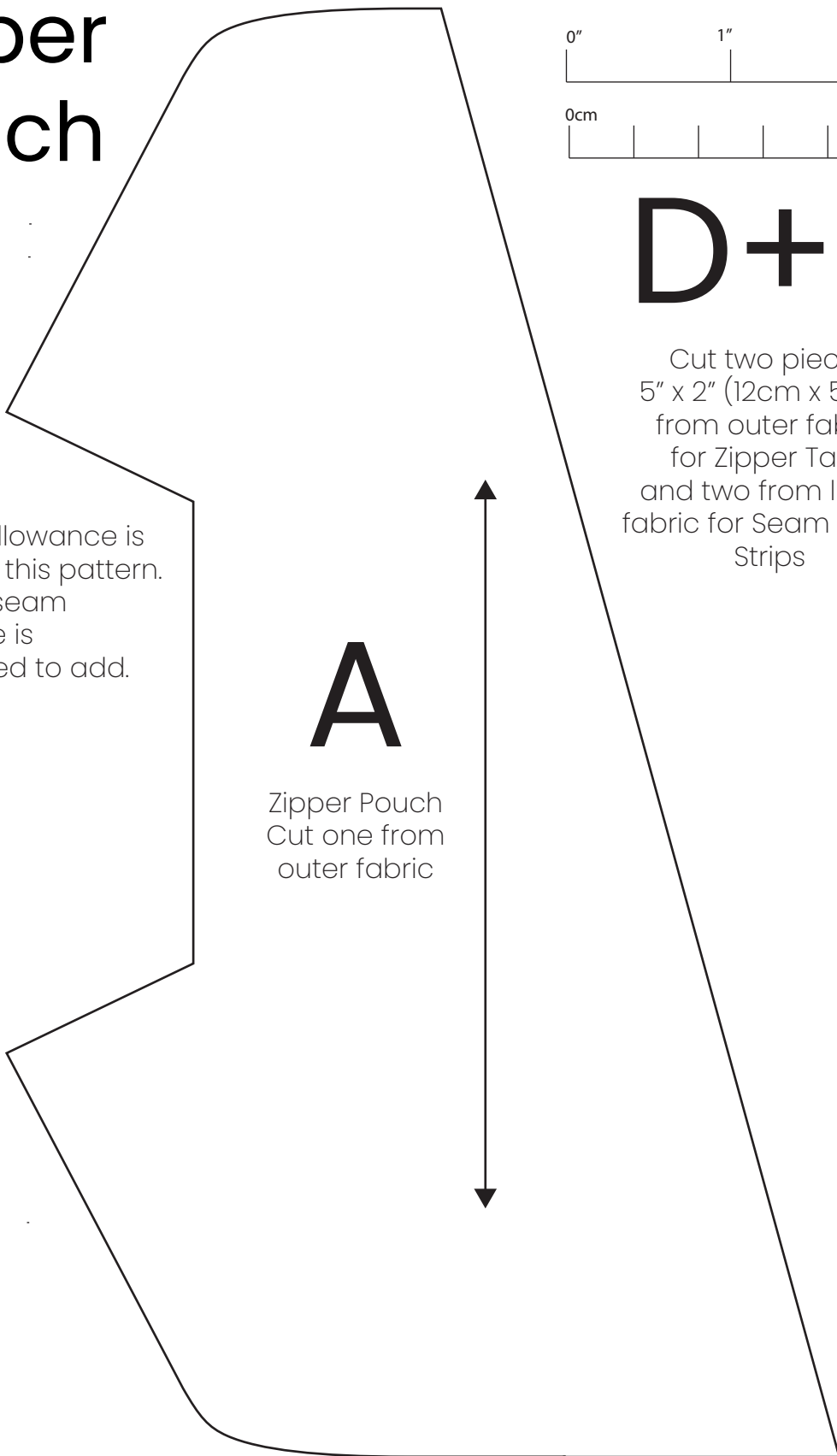
D+F

Cut two pieces
5" x 2" (12cm x 5cm)
from outer fabric
for Zipper Tabs
and two from lining
fabric for Seam Cover
Strips

No seam allowance is
included in this pattern.
3/8" (1cm) seam
allowannce is
recomended to add.

A

Zipper Pouch
Cut one from
outer fabric

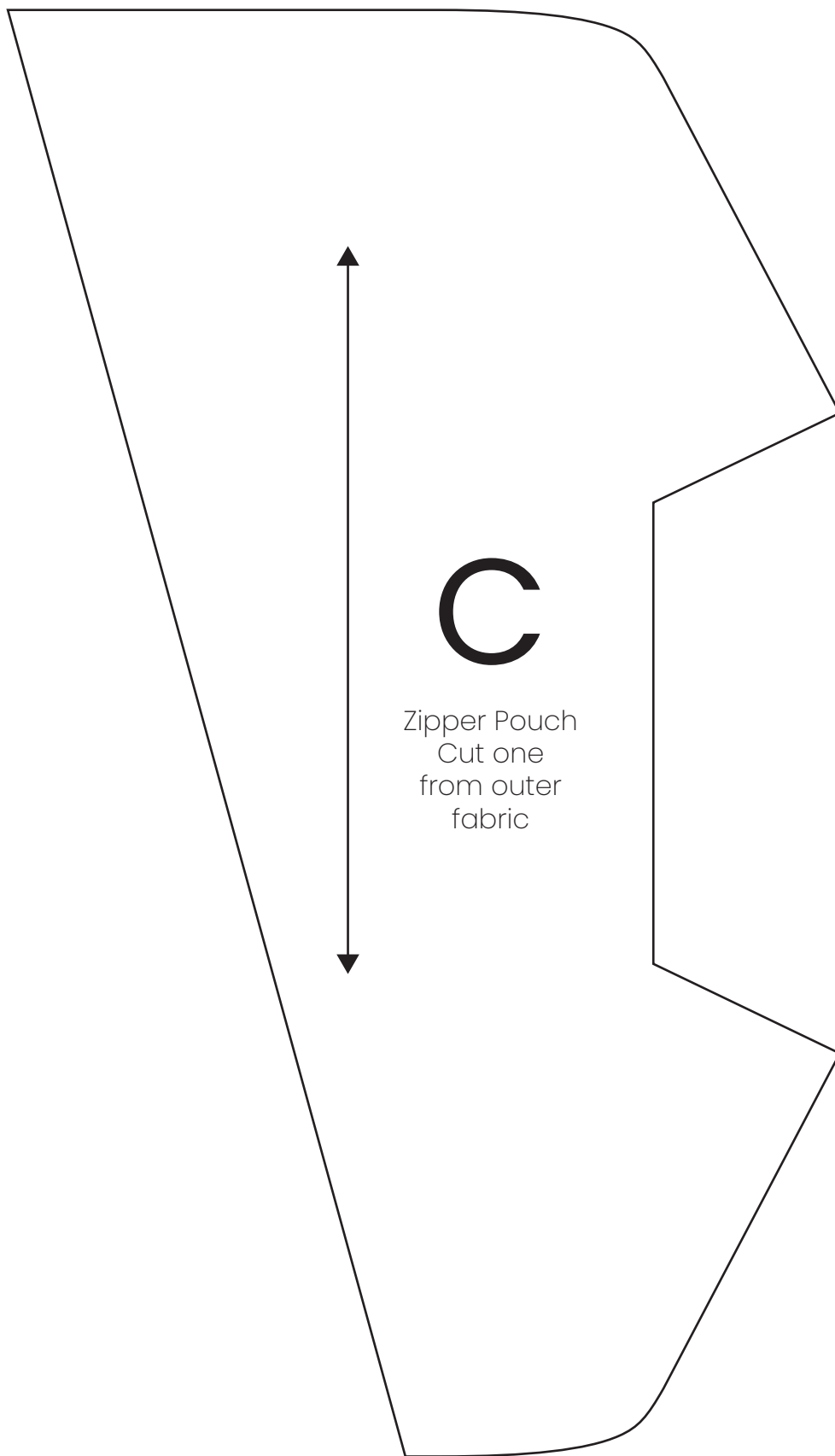




B

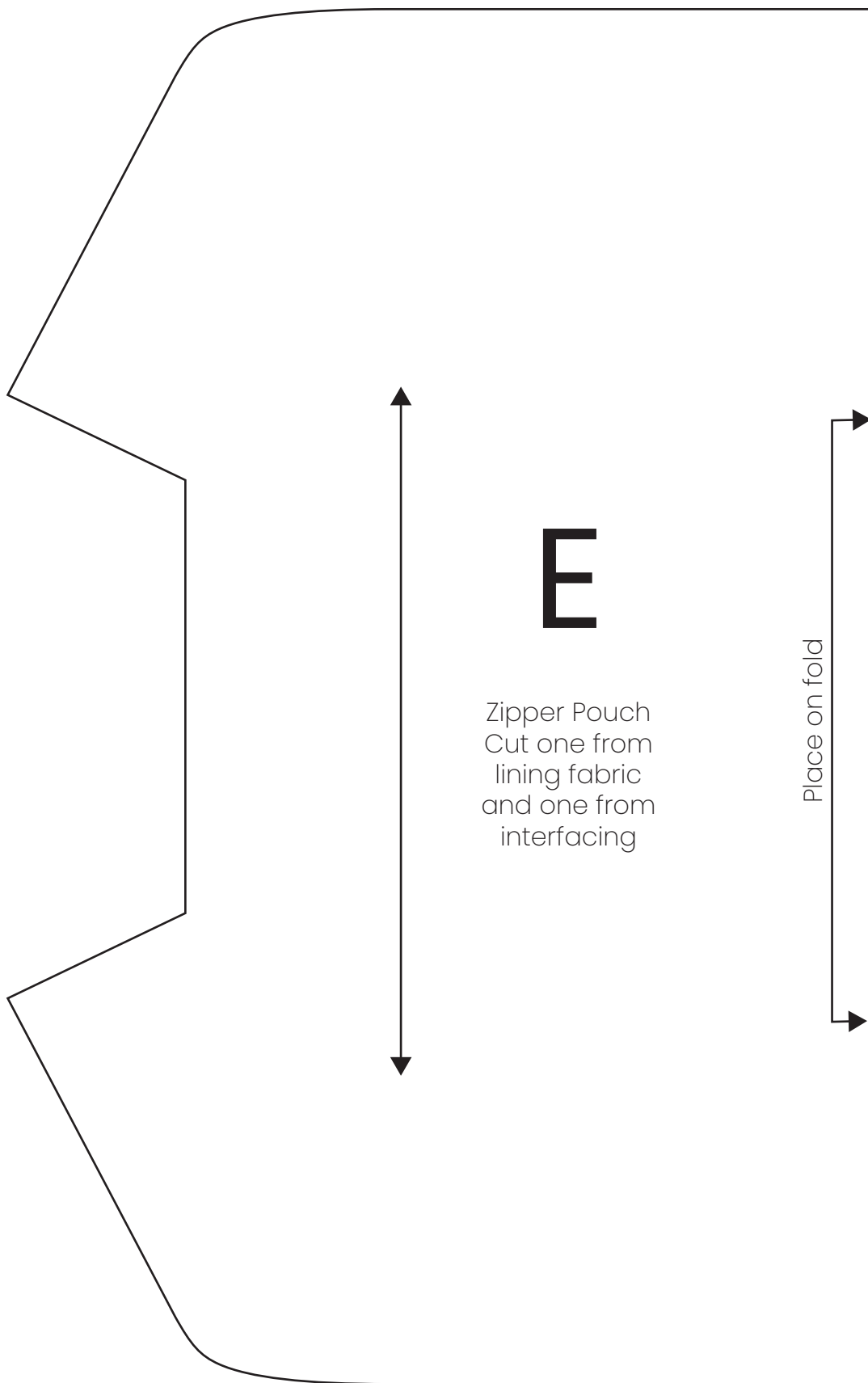
Zipper Pouch
Cut one from
outer fabric





C

Zipper Pouch
Cut one
from outer
fabric



E

Zipper Pouch
Cut one from
lining fabric
and one from
interfacing

Place on fold